



# TACTICAL FISHING™ LIGHTS

## LINE LIGHTS®

### Lure Illuminators

LIGHT WHEN THERE'S NONE FROM THE SUN™

*Brite-Strike® Line Lights® Illuminators  
light up your lures, soft baits, or any rig.*

GET MORE  
**STRIKES**  
With Line Lights®  
Lure Illuminators

PATENTED  
BREAKTHROUGH LED  
TECHNOLOGY  
ATTRACTS MORE FISH.



*Jimmy Houston*  
SIGNATURE SERIES





# LINE LIGHTS<sup>®</sup> Lure Illuminators

LIGHT WHEN THERE'S NONE FROM THE SUN™

**MAKES ALL LURES AND SOFT BAITS VISIBLE IN DEEP OR DARK WATER!**



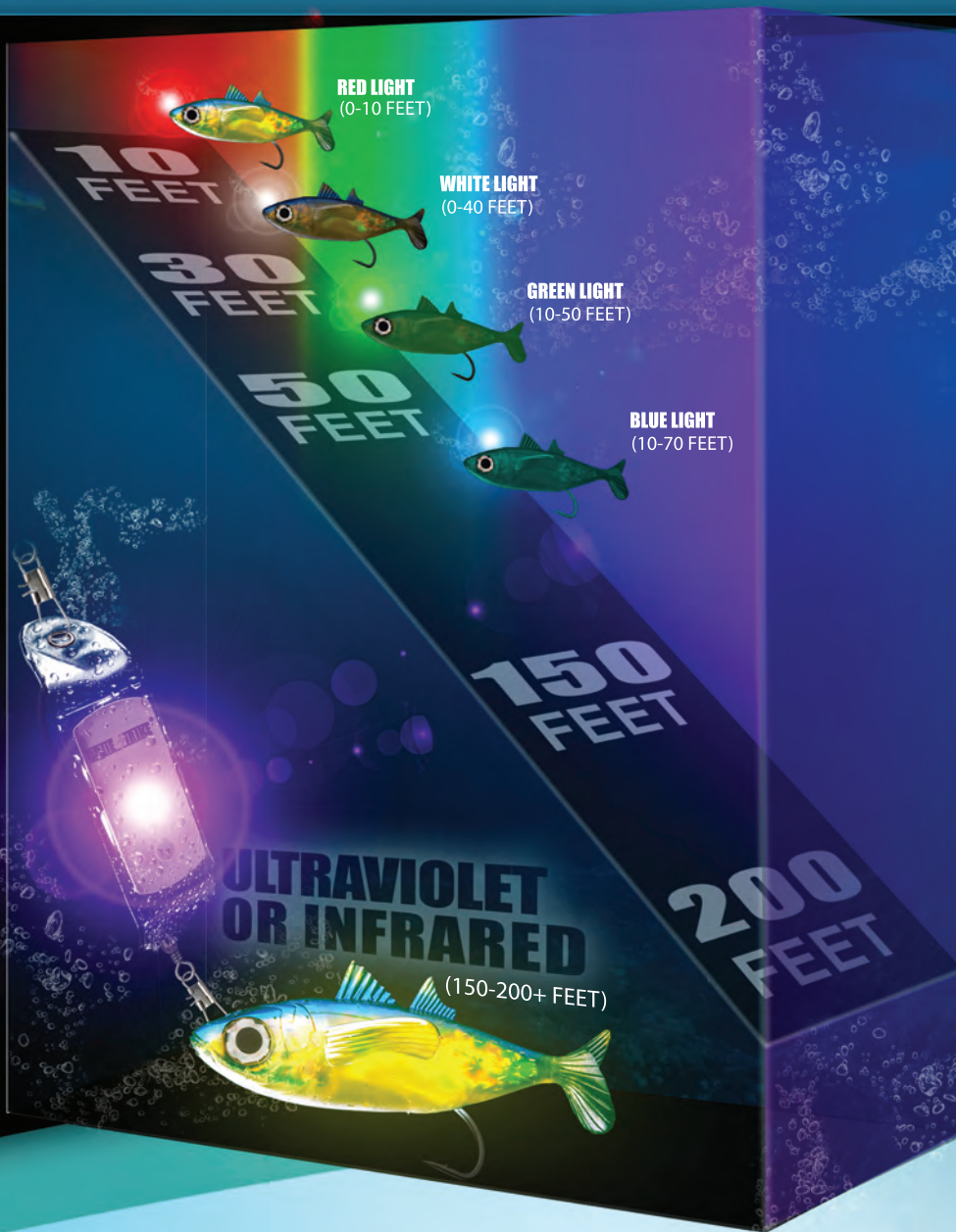




**JIMMY HOUSTON**  
AMERICA'S FAVORITE  
FISHERMAN







## THE LINE LIGHT® LURE ILLUMINATOR DIFFERENCE

### UNCOATED LURE WITHOUT A LINE LIGHT® LURE ILLUMINATOR



### UV COATED LURE WITHOUT A LINE LIGHT® LURE ILLUMINATOR



### UV COATED LURE WITH UV LINE LIGHT® LURE ILLUMINATOR



ILLUMINATES LURE AT ANY DEPTH!

## LINE LIGHTS® LURE ILLUMINATORS DO NOT REQUIRE LIGHT FROM THE SUN

### PATENTED BREAK THROUGH LED TECHNOLOGY ATTRACTS MORE FISH.

Science has shown that fish can see in the UV light wavelengths of 400 nm to 310 nm band which is invisible to humans. UV light can penetrate to much greater depths than visible light. While the trend in fishing lures is toward UV coatings and infused UV reflective materials for plastic soft baits, the very latest research shows that some types of fish and amphibians can see in the near infrared range, also invisible to humans. On a bright sunny day when the sun is at its highest point, less than 3% of UV light penetrates the atmosphere. Only a fraction of that amount penetrates on cloudy days and none when it is dark. In deep or dark, dirty water only a fraction of any light can penetrate the water's surface with UV penetrating the most. Infrared light works in the very darkest and dirty water but needs to be provided by an artificial IR light source.

Lighted lures have been around for a while but they are specific to certain types of fish and have automatic switches that turn on when they hit water. They also turn on in your tackle box due to condensation and are dead the next time you go to use them. Brite-Strike® Line Lights® lure lights have manual switches and can be set to steady on, fast flashing or slow flashing modes. They can be used with your favorite lure, rig or bait for any type of fishing from shallow ponds to deep ocean sport fishing. Brite-Strike® Line Lights® lure lights in the visible spectrum work much the same as lighted lures but you don't have to buy dozens of different shapes and sizes for different types of fish. Use Brite-Strike® Line Lights® Illuminators with your favorite set-up!

US PATENT NUMBERS: 9,013,100/9,030,085/9,221,594/9,347,625

**Note:** Brite-Strike Technologies Inc. offers a Mil Spec lure and rig lighting system that in certain conditions produce better results in attracting fish. We are a technology company, we do not manufacture "As Seen On TV" type products or make any sensational claims that you will catch hundreds of fish in any conditions. Brite-Strike® Line Lights® lure and rig illuminators are simply another tool in your tackle box that can be used in conjunction with your favorite lure or set-up in multiple ways to improve your ability to attract more fish in certain conditions.





# LINE LIGHTS<sup>®</sup>

## Lure Illuminators

LIGHT WHEN THERE'S NONE FROM THE SUN<sup>™</sup>

GET MORE  
**STRIKES**  
With Line Lights<sup>®</sup>  
Lure Illuminators  
PATENTED TECHNOLOGY

### BRITE-STRIKE<sup>®</sup> LINE LIGHTS<sup>®</sup> LURE ILLUMINATORS- RECOMMENDED USE CHART:

**RED LINE-LIGHT<sup>®</sup>**  
**LURE ILLUMINATOR (0-10 FEET)**

Best used in shallow freshwater ponds from surface to 10 feet in slow flashing mode as it simulates a bleeding bait fish. Fish are hard wired to strike when they see a wounded helpless bait fish.

Runtime: up to 200 hours.

Model:RED-LL-JHCB-1

**WHITE LINE-LIGHT<sup>®</sup>**  
**LURE ILLUMINATOR (0-40 FEET)**

White is less effective than green or blue but in certain conditions can be combined for good effect like when the clouds are moving from dark to full sunlight.

Runtime: up to 200 hours.

Model:WHI-LL-JHCB-1

**GREEN LINE-LIGHT<sup>®</sup>**  
**LURE ILLUMINATOR (10-50 FEET)**

Best general purpose use for all types of fish but best for saltwater sport fishing as it attracts plankton and bait fish. Saltwater sport fish see it as squid, their favorite food. Works well at all depths to 100 feet.

Runtime: up to 200 hours.

Model:GRN-LL-JHCB-1

**BLUE LINE-LIGHT<sup>®</sup>**  
**LURE ILLUMINATOR (10-70 FEET)**

Best used in saltwater from 10 feet to 70 feet. Some sport fish see this almost as well as green. Blue can be combined with a green for killer results.

Runtime: up to 200 hours.

Model:BLU-LL-JHCB-1





# LINE LIGHTS® Lure Illuminators

LIGHT WHEN THERE'S NONE FROM THE SUN™



## ATTRACT AND CATCH MORE FISH WITH ANY LURE, RIG, JIG OR BAIT SET-UP!

Lighted lures have been around for a while but have the problem that they are specific to certain types of fish and have automatic switches that turn on when they hit water. Brite-Strike® Line Lights® Lure Lights have manual switches and can be set in steady on, fast flashing or slow flashing modes. They can be used with your favorite rig for any type of fishing from shallow ponds to deep ocean sport fishing.

You don't have to buy dozens of LED lighted lures for different types of fish. Lighted lures have automatic switches and are notorious for turning back on from condensation in your tackle box so it does not work the next time you go fishing. What seems like a good idea in theory is terrible in real world use. Brite-Strike® Line Lights® Fishing Lure Lights are like nothing else! The PVC torpedo shape is flat and weighs almost nothing. The ends have grommets that can attach to any line with swivel snaps. The flexible ends move through the water silently and efficiently and will not disturb the flow through the water of your lure or rig.

### ○ SINGLE END ATTACHED TO THE LINE ○ HORIZONTAL ATTACHMENT:

*Our Jimmy Houston Signature Series Line Lights® Illuminators are designed to be attached by a single end with a snap swivel to your line or leader to follow along like a bait fish and not disrupt the natural flow of you lure or soft bait. The clear super flexible PVC pouch is UV protected and has light that emits from both sides*

### ○ BOTH ENDS THROUGH THE LINE ○ VERTICAL ATTACHMENT:

*Your fishing line is attached through the grommets at each end of the Line Light® Illuminator and can be set to a specific height above your lure, soft bait or bait with a line stopper. Depending on factors such as depth, turbidity and the amount of light from the sun will determine how close to your lure or bait. Experiment to see what works best.*





# GET MORE STRIKES

With Line Lights®  
Lure Illuminators



**WATERPROOF**  
DOWN TO  
**200**  
FEET

**JIMMY HOUSTON**  
AMERICA'S FAVORITE  
FISHERMAN

## FEATURES:

- Up To 200 Hours Runtime
- Visible At Any Depth
- High Output Long Life LED's
- Marine Grade UV Protected PVC Pouch
- Torpedo Shaped With Two Grommets
- Waterproof Down To 200+ Feet
- Shockproof
- Impervious To Extreme Cold And Heat



### CORROSION PROOF

Corrosion proof  
grommets.



### 200 HOURS

Up to 200 hours  
runtime.



### MANUAL SWITCH

Steady on,  
fast flashing or  
slow flashing and  
off modes.





# LINE LIGHTS®

## Lure Illuminators

LIGHT WHEN THERE'S NONE FROM THE SUN™

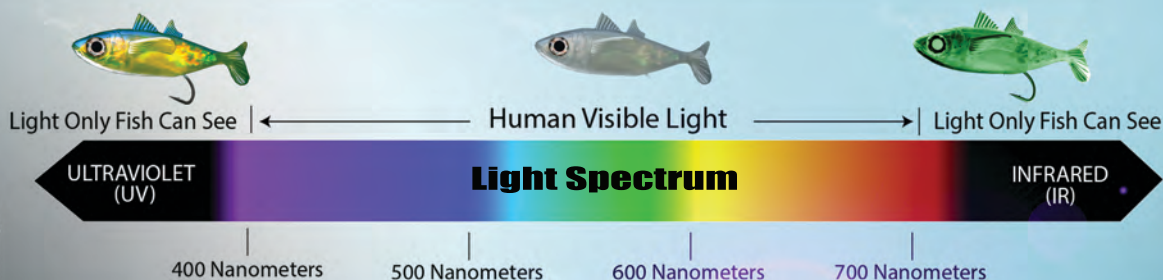
### ATTRACT AND CATCH MORE FISH WITH ANY LURE, RIG, JIG, OR BAIT SET-UP

#### UV (Ultraviolet) and IR (Infrared), LIGHT THAT ONLY THE FISH SEE

Brite-Strike Technologies Inc. USA is not an "As Seen on TV" company that is hawking the latest gimmick. We are a technology company that designs LED specialty items for our Military, Elite Special Forces Teams and Law Enforcement Agencies. The core of our Line Lights® lure and rig illuminator system is our patented APALS® or All Purpose Adhesive Light Strips. They have multiple patents issued and more pending. Line Lights® LED Lure Illuminators are not dependent on light from the sun as they provide their own light! The polished aluminum front reflects LED light onto your lure or rig in any conditions and at any depth!

Live fish naturally reflect UV and IR light so the best lures, soft baits and rigs try to mimic this reflected light with bright paint UV coatings or infusions. Brite-Strike® UV and IR Line Lights® lure lights produce light that projects onto the surface of your lure, soft bait, rig or bait and moves with your set-up to provide the most realistic presentation of live bait fish.

The torpedo shaped Line Lights® lure lights are waterproof, shockproof and has grommets at each end to attach with a snap or swivel snap to your line or rig. The shape is designed to move silently through the water at the surface or in deep water. The flexible PVC torpedo pouch moves like a real fish.



TRUE  
**UV**  
ULTRAVIOLET

Model: UV-APALS-LL-SLV

#### OUR UV LINE LIGHTS® FISHING LURE LIGHTS ARE SET AT 385 NM (NOT VISIBLE TO HUMANS)

Brite-Strike® UV Line Lights® fishing lure lights are set at 385 nm (not visible to humans). They work best in very deep or dark and dirty water at any depth when there is very little natural light. If you are using a UV coated lure or rig at less than 30 feet there may be sufficient UV light penetration from the sun. Brite-Strike® UV Line Lights® illuminators have a proprietary dye coating on the UV LED so that you can see a faint violet light to let you know it is on. Use either polished aluminum front version, flat white or flat black LAT™ (light absorbing technology) to match the type of tackle and conditions. Runtime: Up to 200 hours.

**HEAVY DUTY COMMERCIAL UV AND IR FISHING LINE LIGHTS® ILLUMINATORS ALSO AVAILABLE**



# ULTRAVIOLET & INFRARED

## LIGHT THAT ONLY THE FISH SEE

**WATERPROOF**  
**200** DOWN TO  
FEET



### TRUE IR

## INFRARED "DEATH RAY"

Model: DTLL-JH-IR



### **INFRARED REQUIRES NIGHT VISION GOGGLES FOR A HUMAN TO SEE.**

Brite-Strike® IR Line Lights® infrared illuminators have a special patented Dual Tac® circuitry that allows you to see if there is power to the invisible IR LED by pressing a secondary switch. A visible LED will turn on and duplicate the operating mode of the IR LED.

The latest science reveals that most salmonid fish can see in the near IR wavelength and will be attracted to it. IR light combined with proprietary black front LAT™ (Light Absorbing Technology) is a fish "death ray" for salmonid fish returning from salt water to fresh for spawning. Runtime: up to 80 hours.

US PATENT NUMBERS: 9,013,100/9,030,085/9,221,594/9,347,625

Page-08



# COOLER & TACKLE BOX LIGHTS

**WATERPROOF**  
**200**  
FEET

- Runtime: Up to 200 hours
- Modes: Steady On / Fast Flashing / Slow Flashing and Off
- 3M® Adhesive Back
- Waterproof, Dustproof & Shockproof

## ALL PURPOSE ADHESIVE LIGHT STRIPS

APALS® light strips are a much "greener" alternative to chemical light sticks as they can be turned off and on and reused many times compared to a one time use chemical light stick. They can be used to light your tackle box, cooler, fishing rod holders or anywhere you require super bright, long lasting lighting. APALS® multi-purpose light strips can reduce volume and weight in your tackle box as they replace several lighting tools with their versatility. A 10 pack will provide up to 2000 hours of light and weighs less than 2 oz. The patented crush-proof pack prevents accidental activation if carried in a cargo pant pocket or in your tackle box. The highly polished aluminum surface is a great daytime signaling mirror. The bright LEDs with fast and slow flashing modes are highly effective at night for signaling a rescue team. APALS® portable light strips are easy to carry in and carry out and are an essential piece of gear in any tackle box.



**GREAT FOR LIGHTING TACKLE BOXES, COOLERS, FISHING ROD HOLDERS OR  
ANYWHERE YOU REQUIRE DURABLE, LONG LASTING WATERPROOF LIGHTING.**



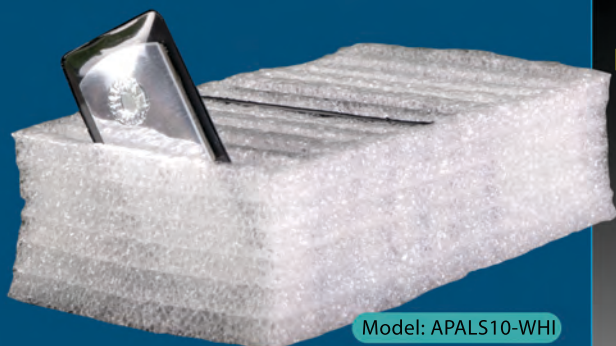


ALL PURPOSE ADHESIVE LIGHT STRIPS, are the perfect fishing accessory to light inside your tackle box or cooler. The white light strips can be stuck anywhere you need them and the flashing modes are ideal for use as emergency signaling system. They are super thin and light with up to 200 hours of runtime.

US PATENT NUMBERS: 9,013,100/9,030,085/9,221,594/9,347,625

## FLEXIBLE CRUSH-PROOF 10 PACK

Patented Flexible Crush-Proof 10 Pack Prevents Accidental Activation.



Model: APALS10-WH1



### HEAVY DUTY ADHESIVE BACK

Heavy Duty 3M® Adhesive Back.

3M® is a registered trademark of 3M® corporation.



### 200 HOURS

Up to 200 hours runtime.



### MANUAL SWITCH

Steady on, fast flashing or slow flashing and off modes.



# **BRITE-STRIKE® ROD TIP STRIKE ALERT LIGHT**





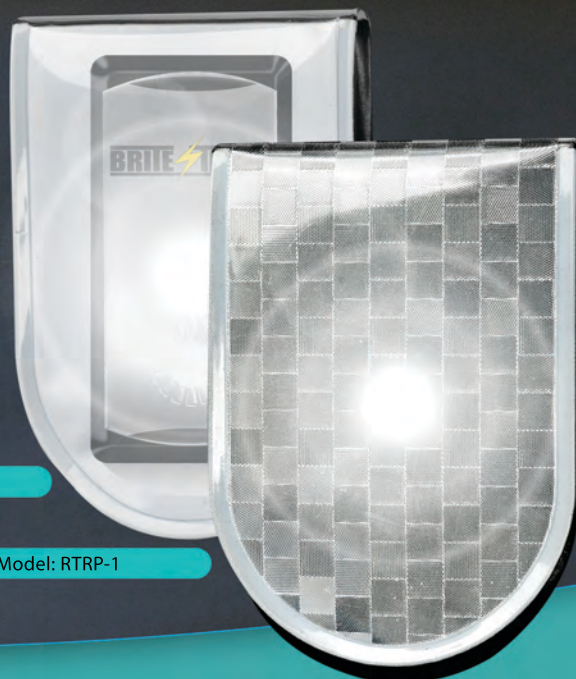
## ROD TIP STRIKE ALERT LIGHT

### Features:

- Quick attach two sided pouch attaches with super strong magnets
- Waterproof, Shockproof
- Up to 200 hours runtime, then just slip in a new APALS® light strip
- Two pockets for optional second light
- Operates in steady on mode or two flashing modes
- Clear front and reflective front versions available
- Can be turned off and reused multiple times

Clear front version Model: RTCP-1

Reflective front version Model: RTRP-1



Includes one white APALS® light strip but can be used with two!



Clear front and reflective front versions available

US PATENT NUMBERS: 9,013,100/9,030,085/9,221,594/9,347,625

Up To **200 Hours**  
**Runtime**  
EACH LIGHT STRIP





# BRITE-BLADE™

**LIGHTED SURVIVAL KNIFE**  
COMBO EDGE SERRATED or STRAIGHT EDGE



**Ferrocerium Fire Striking Tool**



**Dual Thumb Posts**



**Cutting, Stripping Tool**



**Red & White LEDs**

## LIGHTED SURVIVAL KNIFE

The hollow ground blade is hand finished to a razor sharp edge. Spring Assisted Opening is best in class.

Brite-Strike® Brite-Blade™ knife is one of the finest survival knives available and is perfect for fishermen and anyone that might find themselves in a wilderness survival situation.

Aluminum mini flashlight with 45 lumen white LED has a rare earth magnetic base that secures it inside the body. The light can be quickly removed from the body of the knife and operated independently. The rare earth magnetic base allows the light to be mounted on the blade for a 90 degree light. A second aluminum mini flashlight with red LED is included. Both mini flashlights are waterproof IXP-6.

### Models:

**BSTLSK-100-CE** (Combo Edge)

**BSTLSK-100-SE** (Straight Edge)

### FEATURES:

- 1 Full Length Spring Steel Clip  
*Never Lose a Knife Again!*
- 2 Extra Clip and Screws  
for Reverse Mount
- 3 Ferrocerium  
Fire Striking Tool
- 4 45 Lumen Red & White LED  
Mini Flashlight
- 5 Carbide Tip Striking Tool
- 6 Dual Thumb Posts
- 7 Seat Belt Cutter & Stripping  
Tool for Making Lashing in  
the Wilderness.  
Great for Cutting Fishing Line



### SPECIFICATIONS:

Body Material: Mil Spec 6061 Aluminum with Hard Anodized Finish  
Blade Types: Combo Edge Serrated or Straight Edge  
Blade Material: 440C Stainless Steel with Proprietary Titanium Coating  
Closed length: 5.1"  
Blade length: 3.5"; Thickness: 1/8" back  
Overall length: 8.6"  
Weight: 5.35 oz  
Overall Width: 1.45"  
Overall Thickness (body): 3/8"

**440C STAINLESS STEEL WITH PROPRIETARY TITANIUM COATING**



# EPLI™

## ULTIMATE FISHING PENLIGHT

FINELY CRAFTED LIGHTING INSTRUMENT FOR THE OUTDOOR ENTHUSIAST.



### ULTIMATE FISHING PENLIGHT

Whether it is used for Hunting, Fishing or any other outdoor activity, you will appreciate the high quality and simple intuitive operation of our EPLI™ penlight. You can never appreciate the innovation and design and quality until you need it in the most dire circumstances.

The EPLI™ fishing light is a slim and sleek light made of high grade aircraft aluminum with Mil Spec graphite anodized finish. The Bezel is polished stainless steel and brass, it looks more like a fine writing instrument than a tactical flashlight. Don't let this elegant exterior fool you.

The EPLI™ penlight uses the latest Cree LED with state of the art, digital power management to deliver maximum power and runtime out of two AAA batteries. The EPLI™ fishing light has a special highly polished steel reflector that is much more narrow and deep than our other lights. The design produces a brilliant, 160 lumen color tuned beam that closely approximates natural daylight. The low setting at 80 lumens is perfect for reading a menu in a dark restaurant and the third setting is a dazzling 160 lumen strobe which can distract and disorient an attacker.

Brite-Strike® EPLI™ penlight is an essential tool for fishermen and outdoorsman.

Model: EPLI



### SOLID BRASS



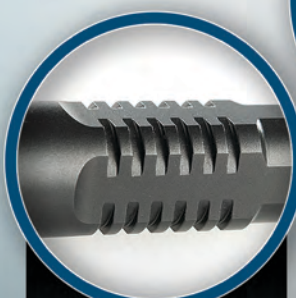
SOLID BRASS HEAD  
WITH POLISHED STAINLESS  
STEEL OVERLAY

### SPECIFICATIONS:

- Max Output: Hi- 160 lumens / Low-80 Lumens / Strobe: 160 Lumens
- Runtime: Hi-(.5 Hours) Low-(6+ Hours) Strobe-(.75 Hours)
- Battery: Two AAA Alkaline (included)
- Length: 5.125 inches
- Waterproof / Shockproof



HI / LOW / STROBE SWITCH  
Rugged waterproof tailcap  
switch design.



ANTI-SLIP DESIGN  
Mil spec graphite anodized finish.



POWERFUL CREE LED  
Latest Cree LED with state of the art,  
digital power management



# ULTIMATE HANDS FREE FLASHLIGHT SYSTEM

The Hi/Lo/Strobe Tactical Touch® switch allows the user to turn the light on with a full press then quickly and effortlessly switch between Hi, Lo and Strobe with a slight press of the finger or thumb. The light will run for up to 3 hours on high, 8 hours plus on low setting of 170 lumens, and 3.5 Hours on strobe (280 lumens).

## Features:

- Max Output: Hi- 280, Lo-170, Strobe- 280 lumens
- Runtime: Hi-(3 Hours) Lo-(8+Hours) Strobe-(3.5 Hours)
- Battery: Two 123A Lithium (Included)
- Length: 5 inches



Model: BTL-QC-P

## HANDS FREE FLASHLIGHT AND ROTO-LOC™ HOLSTER

The Brite-Strike® hands free flashlight system combines our BTL tactical flashlight with the custom Roto-Loc™ Quick Cam 360° rotating, locking holder. The Roto-Loc™ holster is adjustable to fit on most belts, pack straps and MOLLE webbing and will lock in any position on the belt or strap and rotate the flashlight so you can aim the light wherever you need it.

The system is the perfect compliment to any head lamp for night fishing as it allows hands free operation and keeps the light positioned at any angle. The Quick Cam Roto-Loc™ holster holds your BTL tactical light firmly and can be removed with a simple flick of the switch.

The BTL provides up to 280 lumens on high and 170 on low and also has an emergency strobe function. The body is aircraft aluminum with black anodized finish, is waterproof and shockproof.



• LOCKING MECHANISM



• ADJUSTABLE BELT CLIP

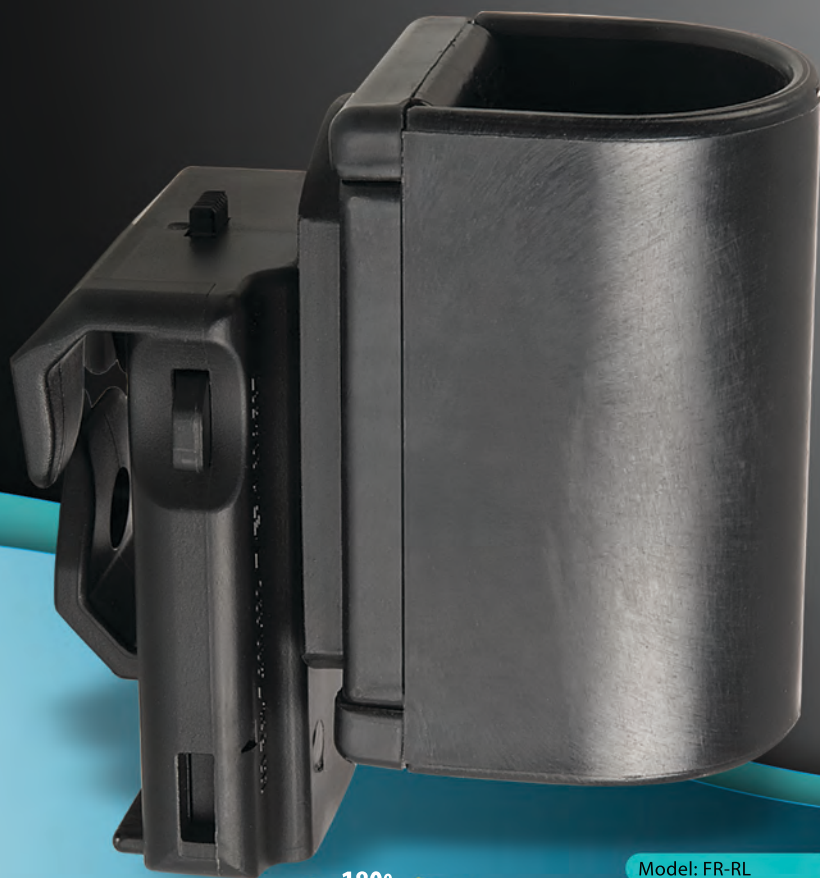


• ROTATES 360°



# ROTATING ROD HOLDER

PERFECT FOR ANY SURF CASTER OR FLY FISHERMAN



180°

Model: FR-RL



*Fits on any belt, strap or MOLLE web that is 1 1/4 inch to 2 1/2 inches wide and locks in place*



## HANDS FREE ROTO-LOC™ FISHING ROD HOLDER

Rotating Rod Holder

Perfect for any surf caster or fly fisherman that needs to change tackle or fly when in the water.

Fits up to 1.5" diameter rod

Slip in strips to custom fit

Rotates the rod out of your way

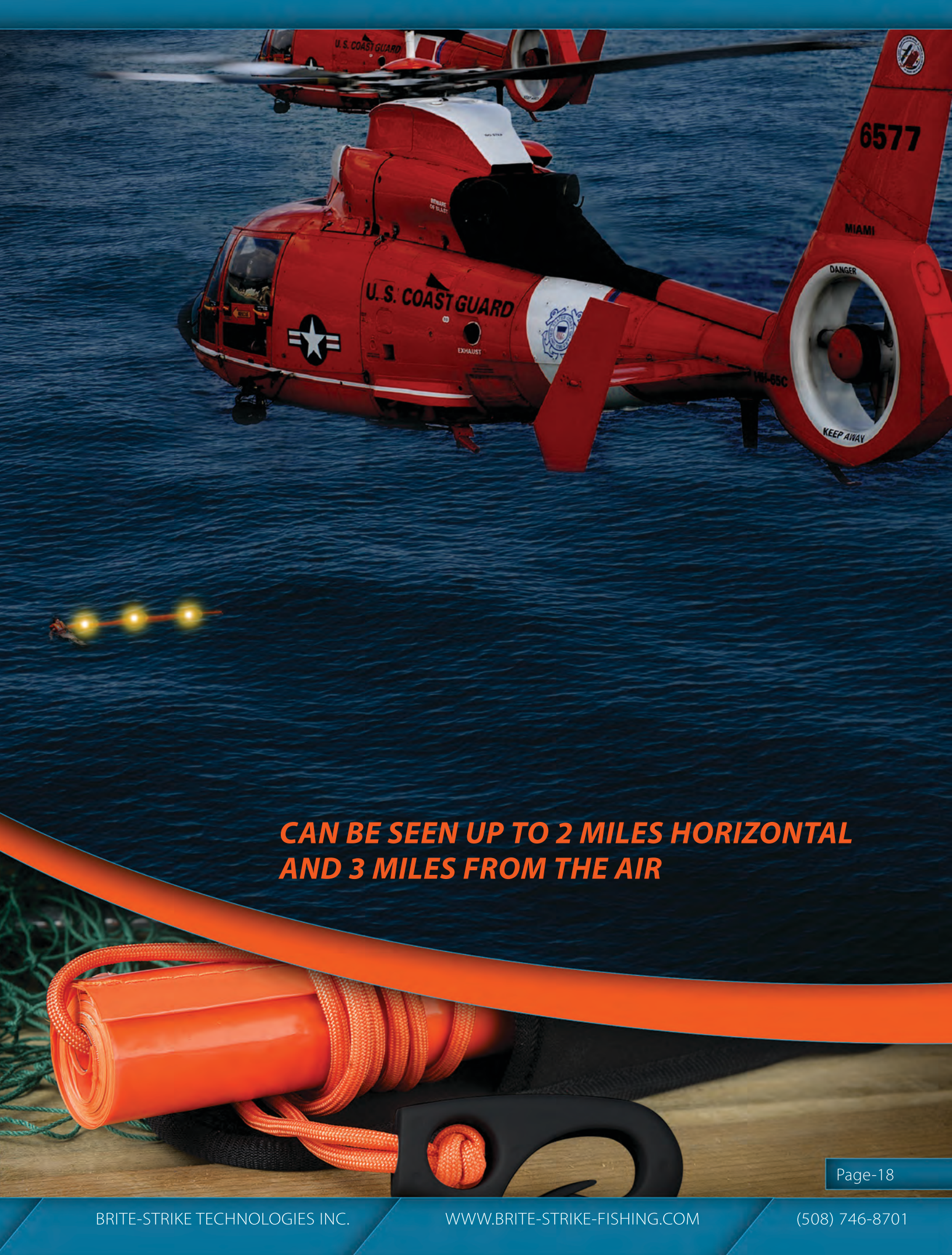


# **BRITE-RESCUE™** **LIGHTED SIGNALING SYSTEM**

ULTRA COMPACT EMERGENCY AIR,  
LAND, SEA LIGHTED SIGNALING SYSTEM







***CAN BE SEEN UP TO 2 MILES HORIZONTAL  
AND 3 MILES FROM THE AIR***





# **BRITE-RESCUE™**

## **LIGHTED SIGNALING SYSTEM**

**CAN BE SEEN UP TO 2 MILES HORIZONTAL  
AND 3 MILES FROM THE AIR**



**ULTRA COMPACT EMERGENCY AIR, LAND, SEA LIGHTED SIGNALING SYSTEM**

*Super tough polyethylene band in no-fade international orange 5" wide by 10' long.*

US PATENT NUMBERS: 9,013,100/9,030,085/9,221,594/9,347,625





Includes a neoprene single handed deployment holster with strap to hook on any vest, bag or pack with MOLLE or strap



Compact design as small as a smart phone!

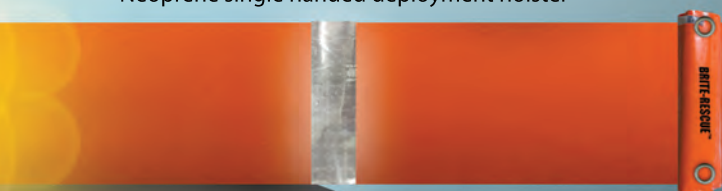
## THE ULTIMATE EMERGENCY AIR, LAND, SEA LIGHTED SIGNALING SYSTEM

### Features:

- Compact size: 1.5" x 5" and weighs 3 oz.
- Extended size: 10' long by 5" wide
- Floats on saltwater and fresh water
- Can be laid flat or tied to a tree as a streamer
- Can be used as a sling or tourniquet
- Corrosion proof clip, grommets on each corner
- Unfurls for deployment in the air
- Can be seen up to 2 miles horizontal and 3 miles from the air

### Includes:

- Super tough polyethylene band in no-fade international orange
- Six international amber LED's with reflective front (APALS-AIR®) up to 200 hours runtime each for a total of over 1200 hours of runtime if used individually
- APALS-AIR® are waterproof tested to 200 feet, shockproof Mil-Spec, NSN assigned.
- Two SOLAS reflective tape strips
- Two 20 hour marine grade glow in the dark tape strips
- Neoprene single handed deployment holster



Model: BRSS-06

INCLUDES  
2  
Glow in the Dark  
Safety Strips

### Waterproof Photoluminescent Glow in the Dark Safety Tape

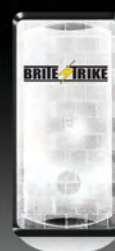
- Glows up to 20 Hours
- Waterproof

INCLUDES  
2  
Solas Strips

### SOLAS Radar Reflective Tape

SOLAS tape is very bright and strong and the adhesive is very aggressive. The candela rating is 1000 which is over 13 times brighter than standard white engineer grade reflective tape.

INCLUDES  
6  
APALS-AIR®



APALS

### APALS-AIR® International Amber LED Reflective Light Strips

- Can be seen up to 2 miles horizontal and 3 miles from the air
- Runtime up to 200 hours
- Modes: Steady On / Fast Flashing / Slow Flashing and Off
- 3M® Adhesive Back
- Waterproof, Dustproof & Shockproof
- Reflective Front



# KAYAK / PADDLEBOARD LIGHTING KIT

NO WIRING, NO DRILLING, INSTALLS IN SECONDS!

**CAN BE SEEN UP TO 2 MILES HORIZONTAL  
AND 3 MILES FROM THE AIR**

## Includes:

- 1 Red APALS® Light Strip
- 1 Green APALS® Light Strip
- 2 White APALS® Light Strips

Model: PBL-4



### HEAVY DUTY ADHESIVE BACK

Heavy Duty 3M®  
Adhesive Back.



### 200 HOURS

Up to 200 hours  
runtime.



### MANUAL SWITCH

Steady on, fast flashing or  
slow flashing and off  
modes.

## Features:

- Can be seen up to 2 miles horizontal and 3 miles from the air
- Runtime up to 200 hours
- Modes: Steady On / Fast Flashing / Slow Flashing and Off
- 3M® Adhesive Back
- Waterproof, Dustproof & Shockproof

US PATENT NUMBERS: 9,013,100/9,030,085/9,221,594/9,347,625



# LIGHTED

KAYAK FISHING GLOVES

Active Illumination Reflective™



Model: PBG-M (Medium)

Model: PBG-L (Large)

Model: PBG-XL (X Large)



#### Includes:

- 2 Red LED LIGHT STRIPS
- 2 Green LED LIGHT STRIPS

- *Synthetic leather palm is lightweight and non slip when wet.*
- *Breathable Stretch Mesh Material*

#### Features:

- Can be seen up to 2 miles horizontal and 3 miles from the air
- Runtime: Up To 200 hours
- Modes: Steady On / Fast Flashing / Slow Flashing and Off
- Water Resistant, Dustproof & Shockproof



APALS

#### APALS-AIR® International Amber LED 2 PACK

- Can be seen up to 2 miles horizontal and 3 miles from the air
- Runtime up to 200 hours
- Modes: Steady On / Fast Flashing / Slow Flashing and Off
- 3M® Adhesive Back
- Waterproof, Dustproof & Shockproof
- Reflective Front

Model: AA-IA-2

Page-22



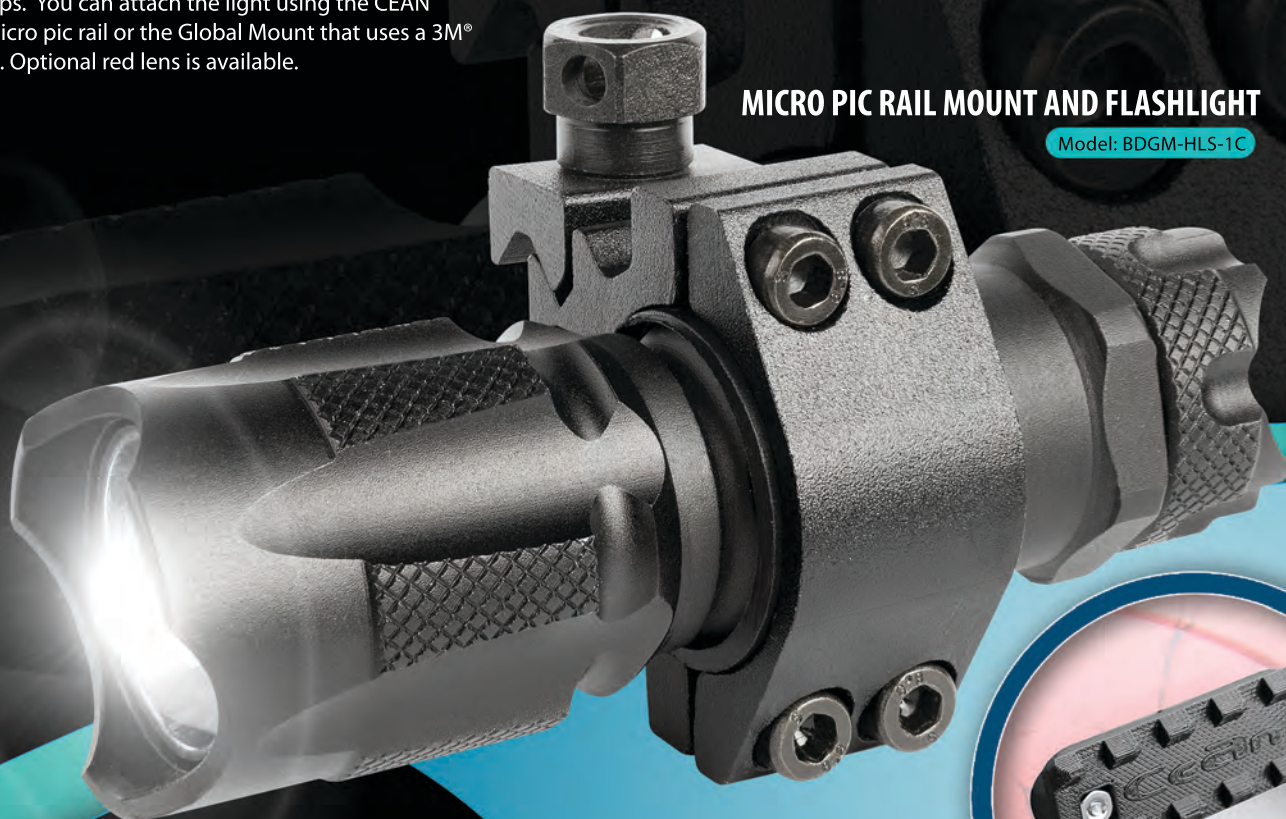
# HANDS FREE LIGHTING KIT

## KAYAK / SURF CASTING HELMET WITH LIGHT

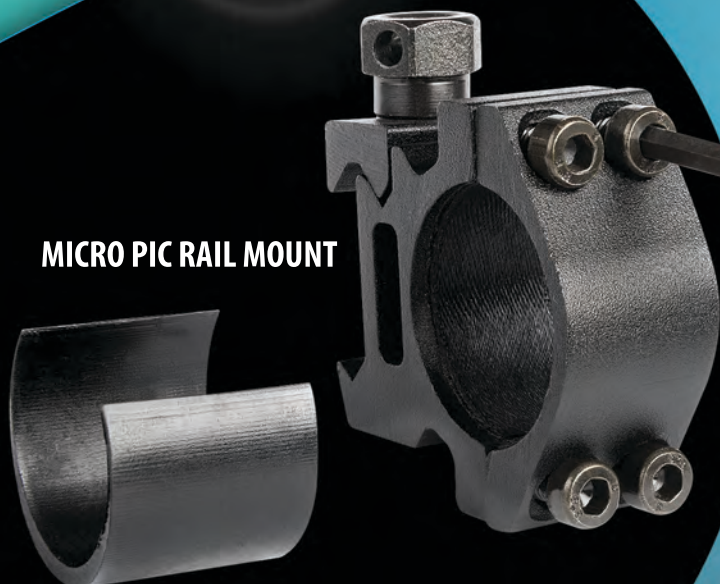
Brite-Strike Tactical Blue-Dot® switch flashlight is simply the finest quality single cell Mil Spec light you can buy. Equipped with the simple to operate Tactical Touch® switch with high, low and emergency strobe settings. The Cree LED produces a blistering 410 lumens of perfect balanced white light that far outperforms typical headlamps. You can attach the light using the CEAN Sports micro pic rail or the Global Mount that uses a 3M® adhesive. Optional red lens is available.

### MICRO PIC RAIL MOUNT AND FLASHLIGHT

Model: BDGM-HLS-1C



### MICRO PIC RAIL MOUNT



### OPTIONAL COLOR LENS Model: BD-CL-RED

The Red Lens is ideal for finding your way in the dark without compromising your natural night vision capabilities.





## KAYAK / SURF CASTING HELMET WITH LIGHT

Brite-Strike Technologies Inc. USA is the leader in innovative LED based technology for military and law enforcement. Now we are planning to take nighttime kayak, jetty and rocky structure fishing to a whole new level of safety and convenience by teaming up with CEAN Sports on Cape Cod.

Kayak Fishing near rocky outcroppings and surf casting off jetties and rocky areas at night can be hazardous to any fisherman. Trying to keep multiple elastic headbands for headlamps and cameras in the correct position can also be a challenge.

CEAN Sports is the a custom water safety helmet manufacturer for coast guard units and water rescue teams around the world. CEAN Sports custom kayak and surf casting helmets are a great way to securely mount your mini-action cam and Mil Spec Tactical Blue-Dot® switch flashlight. The CEAN Sports helmet is vented and can keep you cool during the day and offer optional micro-fleece liners for cool Spring or Fall fishing.

The CEAN Sports custom light weight surf casting and kayak fishing helmet not only keeps you safe but also is the most convenient way to affix your Go Pro® or other action camera and advanced lighting system. Once attached, they are always in the exact spot you want the light and camera to be pointing. No more fooling around with a headband with a headlamp or needing a second headband for your action camera that keeps slipping when the action gets hot!

Contact Sales at CEAN Sports on Cape Cod; [Sales@ceansports.com](mailto:Sales@ceansports.com), [www.ceansports.com](http://www.ceansports.com)



Optional Global Mount with 3M Adhesive Flashlight Sold Separately

Model: GM-002





# HATCH ATTRACTING BAND

## WITH ULTRAVIOLET AND WHITE APALS® LED'S FOR FLY FISHING



- Can be seen up to 2 miles horizontal and 3 miles from the air
- Runtime up to 200 hours
- Modes: Steady On / Fast Flashing / Slow Flashing and Off
- Waterproof, Dustproof & Shockproof



Includes a neoprene single handed deployment holster with strap to hook on any fly vest, strap, bag or pack with MOLLE.

### PERFECT FOR THE FLY FISHERMAN

The floating LED light band can be drifted on the surface to a holding pool below a riffle with the white and UV APALS® LED's facing to the sky to attract the hatch to a specific area. Brite-Strike® Custom Shop will create whatever color combination of APALS® LED Light Strips you want. We still include 2-SOLAS tape strips and 2-20 hour marine grade glow in the dark photoluminescent tape strips so it can be used as an emergency signaling device.

Model: FB-4W-4UV



Super tough polyethylene band in no-fade international orange 5" wide by 10' long.





# LIGHTED FISHING BAND

WITH GREEN APALS® LED'S FOR CATFISH AND CRAPPIE

- Runtime up to 200 hours
- Modes: Steady On / Fast Flashing / Slow Flashing and Off
- Waterproof, Dustproof & Shockproof



## JIMMY HOUSTON SIGNATURE SERIES LIGHTED FISHING BAND

Jimmy Houston knows how to catch Bass but he also has some great ideas on how to catch more Catfish and Crappie! The Jimmy Houston Signature Series Lighted Fishing Band is a variation of the Brite-Strike® Brite-Rescue™ Lighted Signaling System, but with all green APALS® LED lights facing down! Hang it off the dock or troll it off the stern and you can call it the Cat and Crappie Magic Carpet! You will catch more fish and it can be flipped over and used as an emergency signaling system. Fishing band has 8 green APALS® LED's along with two SOLAS tape strips and two glow in the dark tape strips.

*Super tough polyethylene band in no-fade international orange 5" wide by 10' long.*



**Custom Color Configurations Available!**

US PATENT NUMBERS: 9,013,100/9,030,085/9,221,594/9,347,625

Model: FB-8G

Page-26





**JIMMY HOUSTON**  
*AMERICA'S FAVORITE FISHERMAN*



**BRITE-STRIKE TECHNOLOGIES INC.**

WORLDWIDE HEADQUARTERS

11 RAFFAELE ROAD  
CAMELOT INDUSTRIAL PARK  
PLYMOUTH, MA 02360

PHONE: (508) 746-8701

FAX: (508) 746-8799

[customerservice@brite-strike.com](mailto:customerservice@brite-strike.com)

©BRITE-STRIKE TECHNOLOGIES INC. ALL RIGHTS RESERVED

Patent Numbers: 9,013,100/9,030,085/9,221,594/9,347,625